

MONCRIEFF STREET, PECKHAM, SE15
FREEHOLD
GUIDE PRICE £1,000,000 - £1,100,000

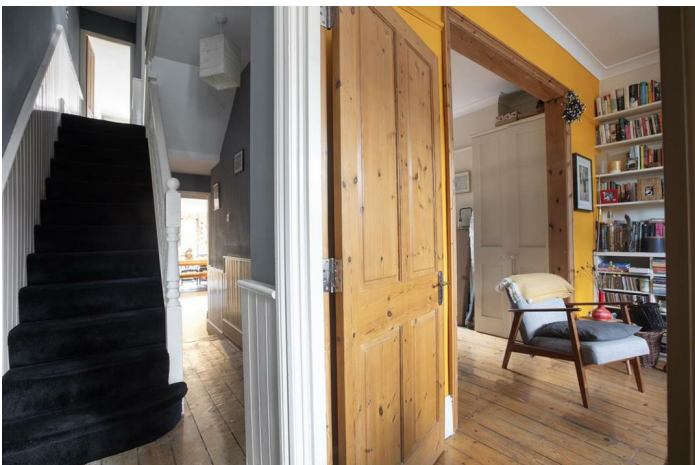


SPEC

Bedrooms : 3
Receptions : 1
Bathrooms : 1
W/C : 1

FEATURES

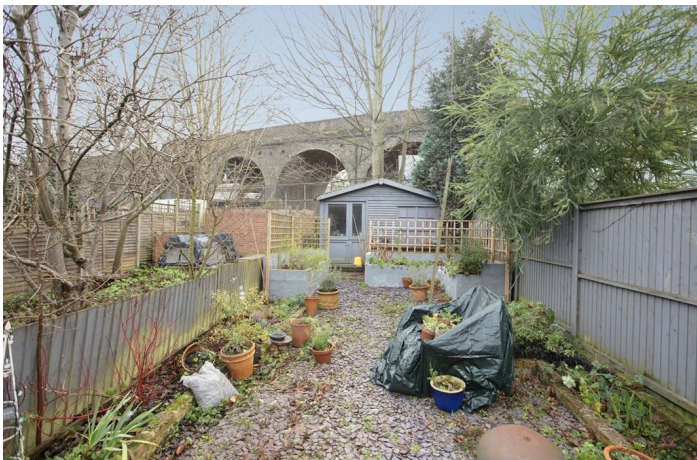
70ft South-Facing Garden
Three Proper Double Bedrooms
Period Features
Convenient Location
Freehold



MONCRIEFF STREET SE15
FREEHOLD



MONCRIEFF STREET SE15
FREEHOLD



MONCRIEFF STREET SE15
FREEHOLD



GUIDE PRICE £1,000,000 to £1,100,000.

Generous Three Bedroom Period Home with 70 ft South-Facing Garden.

This large 3 bedroom Victorian home has accommodation over two floors and is well-proportioned with three good sized double bedrooms, a large double reception, spacious kitchen/diner, family bathroom and separate guest w/c. There is a good size loft suitable for development (subject to planning). The 70 ft rear garden is South facing and perfect for growing flowers and veg as well as dining/entertaining. Whilst on a peaceful street, the property is located within a short walk of Peckham Rye Station, Rye Lane shops and a wide range of culture, cafes and eateries. Peckham Rye Station has connections to Victoria, London Bridge, Blackfriars, Shoreditch, Clapham and beyond. Queens Road Station is also easily walkable and many buses to all parts of London serve Rye Lane.

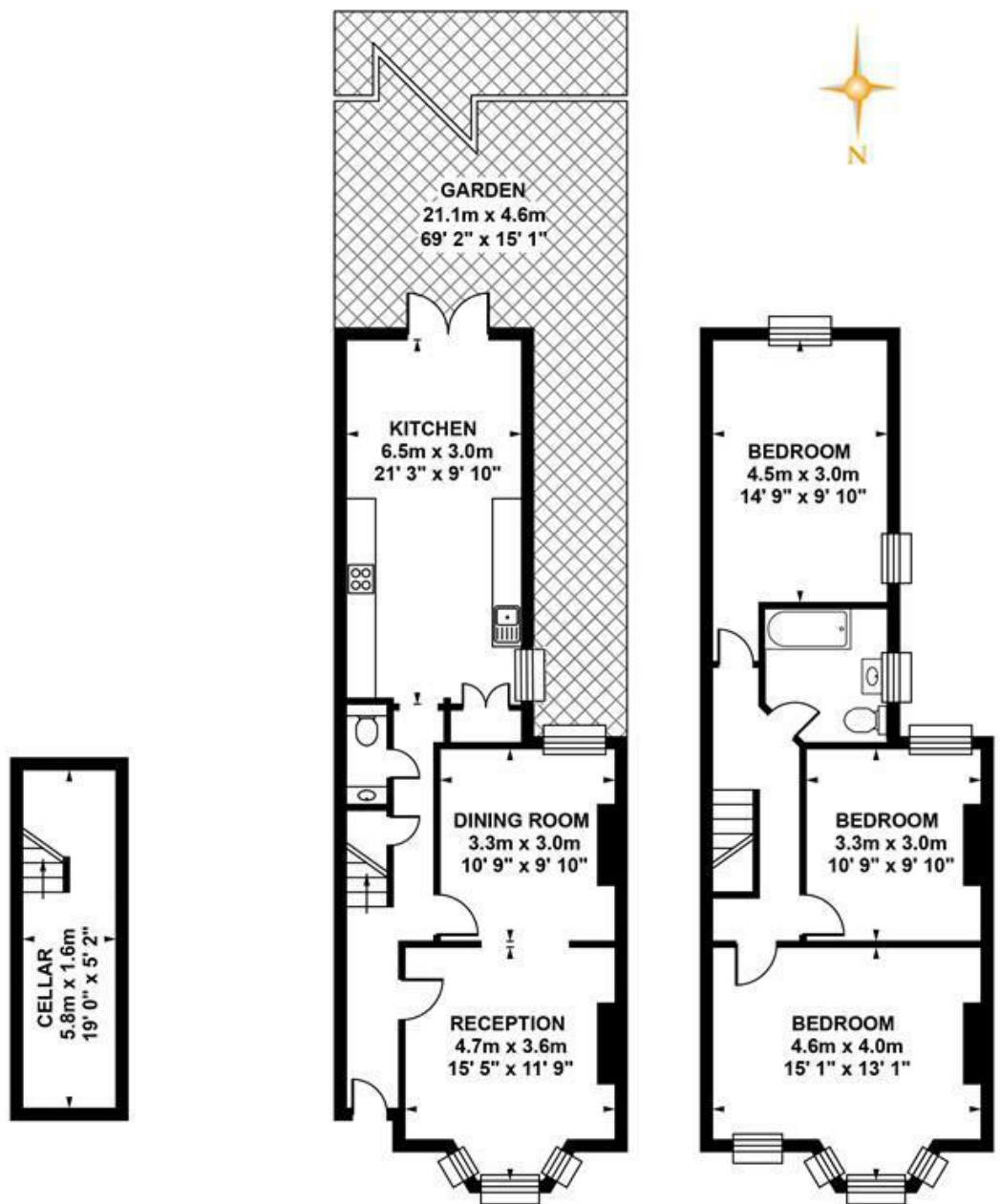
The entrance to the house leads to a long hall with original cornicing and corbels, wooden panelling to dado rail level and rich grey walls. A large double reception on your right has original timber flooring, simple coving and an aspect to front and rear. The wide bay has full plantation shutters and the whole space has picture rails. Along the hall with one step down you'll find a guest WC and low-level access to the storage cellar. The kitchen/diner stretches almost 7 metres with fitted shaker-style cabinets, solid wood counters with a ceramic sink and drainer and bespoke fitted shelving. A fantastic dining area leads to French doors which open to the York Stone patio. From here you rise 2 steps to an expansive slate chip area with several raised planting beds. The sheltered South-facing aspect means the outdoor space can be enjoyed all year round. A large watertight garden shed provides excellent storage and has the potential to be developed for leisure use or as a work-from-home space.

Upstairs to the first return you find the same wooden panelling as below with a generous double bedroom with timber floors and dual aspect facing over the garden. The family bathroom shares this level and has a period-style suite with a roll top bath as well as a modern over-bath shower, heated towel rail and practical embossed flooring. Four steps lead to the front-facing master bedroom which has full plantation shutters on the bay and additional window and a period-style fireplace. Bespoke fitted wardrobe and cupboards provide excellent storage. The third double bedroom has timber flooring and a large sash window facing the garden.

As well as excellent public transport facilities, resident on-street parking with permit is available. A large Morrisons is close by as well as many independent shops. Peckham Pulse Leisure Centre and Peckham Library are within 5 minutes walk and Peckham-plex Cinema is 3 minutes away.

Tenure: Freehold

Council Tax Band: D



**LOWER
GROUND FLOOR**

Approximate. internal area :
9.28 sqm / 100 sq ft

GROUND FLOOR

Approximate. internal area :
52.37 sqm / 564 sq ft

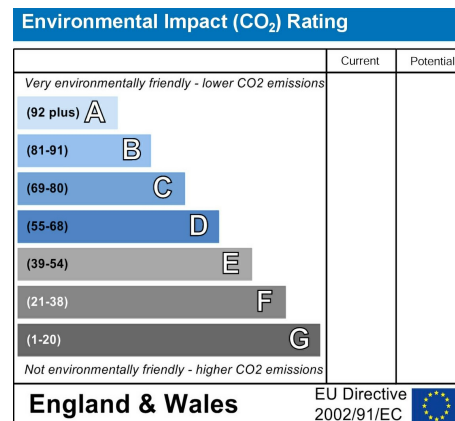
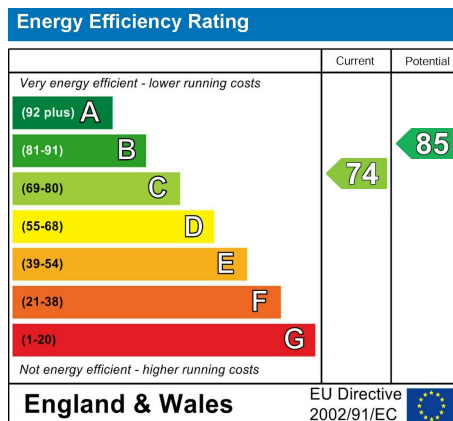
FIRST FLOOR

Approximate. internal area :
52.90 sqm / 569 sq ft

TOTAL APPROX FLOOR AREA

Approximate. internal area : 114.55 sqm / 1233 sq ft
Measurements for guidance only / Not to scale

MONCRIEFF STREET SE15
FREEHOLD



All information supplied should be checked by your solicitor prior to exchange of contracts. Lease details, measurements, floorplans and photographs are displayed for guide purposes only. We have not carried out a structural survey and the services, appliances and specific settings have not been tested.

